

JONATHAN TITUS

Department of Biology 133 Science Center State University
of New York at Fredonia Fredonia, NY 14063
email: *Jonathan.Titus@fredonia.edu*

**FORESTED WETLAND COMMUNITY
DESCRIPTION AND ANALYSIS.
A PRE-EMERALD ASH BORER STUDY
IN AN ERA OF GLOBAL CHANGE**

*While with an eye made quiet by the power
Of harmony, and the deep power of joy,
We see into the life of things.
Wordsworth 1798*

ABSTRACT

Trees in 11 900 m² plots at four headwater wetland sites (Elm Flats, Bonita Swamp, Frog Valley and Bentley) have been identified and measured for 9 years. At Elm Flats trees exhibited a hump-shaped basal area distribution with a high proportion of shade tolerant trees in the larger size classes. This is indicative of a forest that has been subjected to limited anthropomorphic disturbance and possibly retains some old growth characteristics. The older forests also had the richest understory flora. Trees at the other three wetland sites exhibited characteristics indicative of successional swamp forests. Early signs of forest change from the invasive insect, the emerald ash borer, which kills ash (*Fraxinus*) trees, the most common species in these swamps, are visible in the annual growth increments, tree mortality and canopy cover. This tree census data, in conjunction with the understory species cover data, will be used to assess the impact of non-native species invasions, in particular the emerald ash borer (*Agrilus planipennis*), and climate change on our forests.

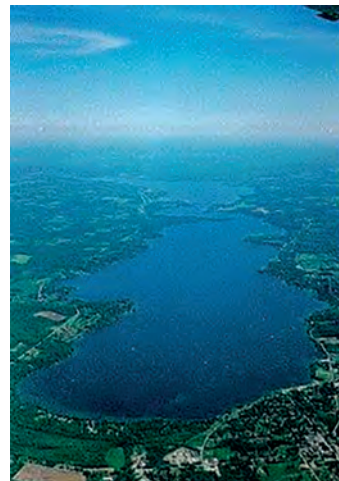
Keywords: *forest, size class, swamps, non-native species, emerald ash borer.*



I am honored to be speaking to you today. The purpose of this talk is to share with the Ablakes community an insight into the nature and significance of research my field. This will focus on explaining the background, methods, purposes, and results of my scholarship and will also broaden the understanding of research being undertaken at Fredonia. I chose this topic because hopefully it is relevant and interesting to the Ablakes community.

I chose this topic because hopefully it is relevant and interesting to the campus and the community.

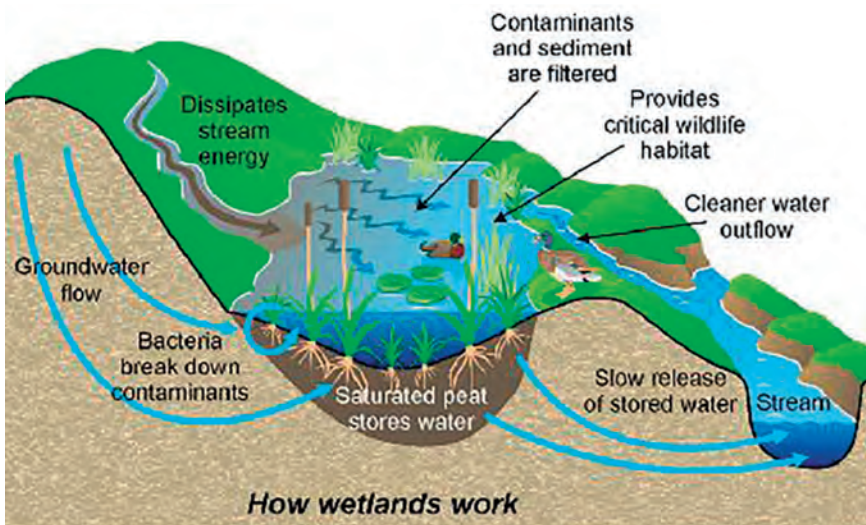
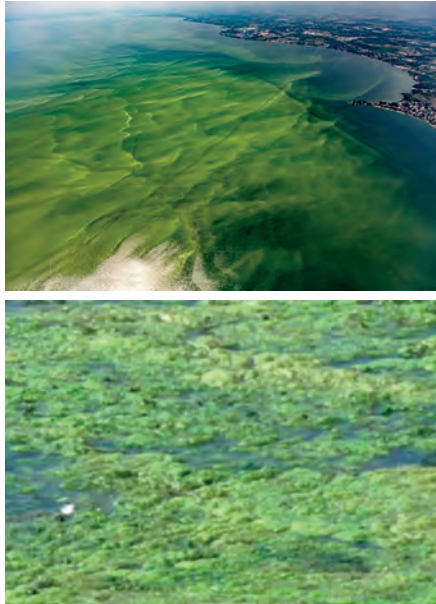
I have conducted research in many different places on many different topics but there is a common theme. All of my research projects have contributed to the research which I will speak about today. I will speak about my current research but I'll mention some previous research as well. First I would like to give you some background on forest ecology so when I give you my research it'll make more sense.



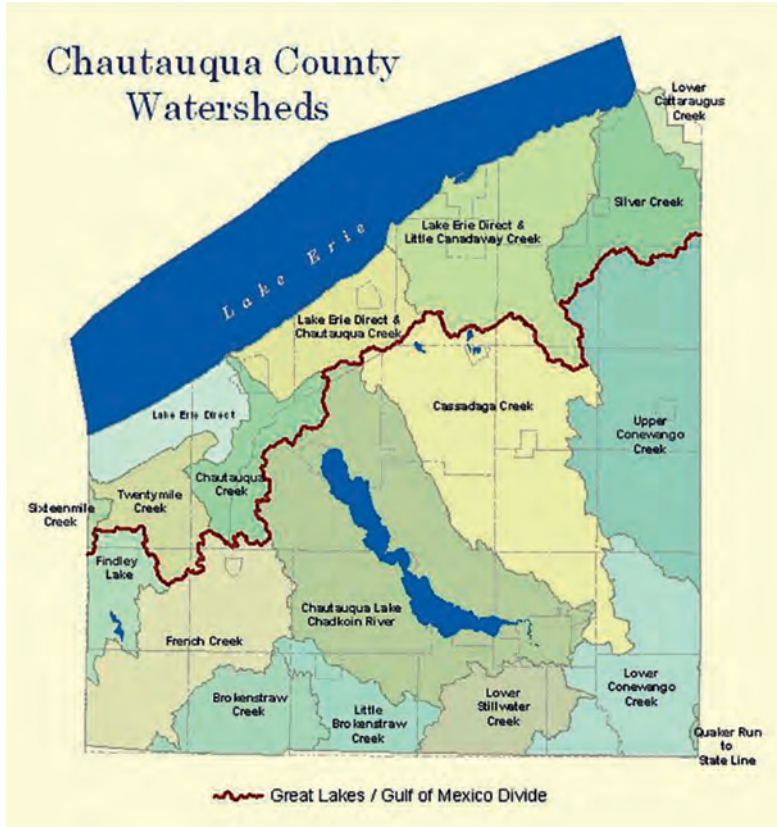
Chautauqua Lake

5180 ha Maximum depth 24m Residence time north basin 514 days south basin 102 days

Highly developed shoreline Naturally eutrophic
Runoff and stream flow ~78% of water input
Lawn fertilization, Dairies, Sewage treatment plants, Algal blooms



Regulate water flow (reduce flooding)
Filter water
Preserve shorelines



Bentley, 2015 flooding



Bonita swamp

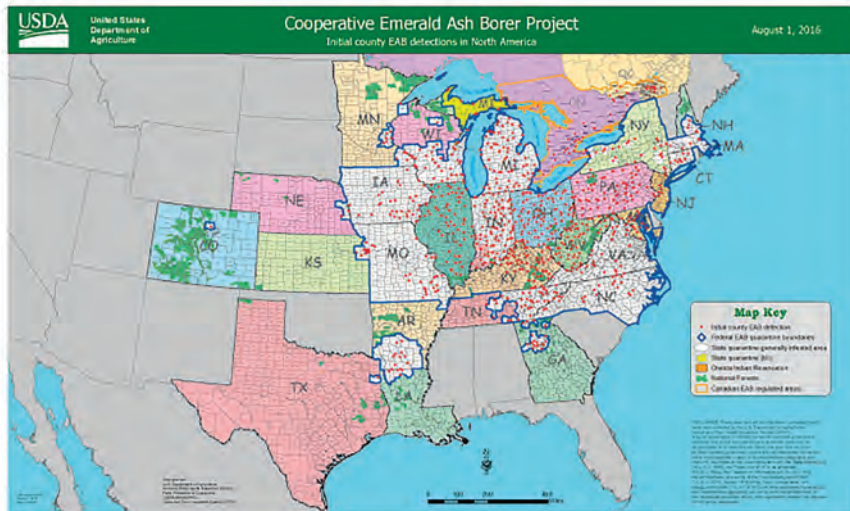


Elm Flats



Frog Valley





Emerald Ash Borer (*Agrilus planipennis*)

- Non-native invasive species
- Rapidly infests all North American *Fraxinus* (ash) species -- 100% mortality in 2-4 years
- Larva feed on inner bark and interrupt the transport system of the tree
- D-shaped” exit hole as adults emerge from the bark
- Females lay eggs on the bark of ash trees. Larva bore through the bark and start eating, leaving “S”-shaped trails.



- Killed >400 million ash trees since 2002
- Spreads via firewood, ash logs, ash products, etc.
- ~20% of NYS is infested by EAB
- 900 million ash trees in NYS at risk (1/10 NYS trees are ash)

Forest Change – Beech Bark Disease

- European scale insect + native *Nectaria* fungi
- In the region for ~50 years
- Very slow killer
- ~10% of beech trees resistant – critical genetic stock
- Beech nuts – **the** critical protein source



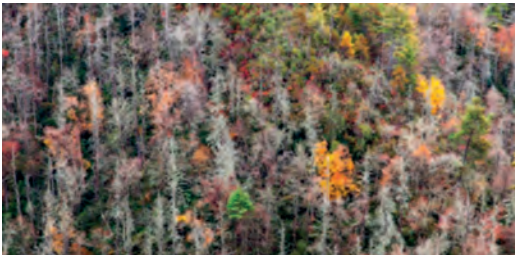
Forest Change – Hemlock woolly adelgid

Chinese “aphid” – 1951 in US

~1.5 mm long, red-brown or purple-black

Once hatched proceeds to feed at the needles

100% hemlock mortality in 4-10 years



Forest Change... Deer – voracious consumers. Vastly overpopulated – no predators.

ALL edible plants are gone from the forest understory.

Climate change: 1.4°C warmer than 1970.

Wetter winters, drier summers – 5% increase in precipitation.

More extreme events.

Winter is 1 week shorter. Ranges are shifting and phenological patterns are changing.



Methods

11 30m x 30m plots, trees tagged

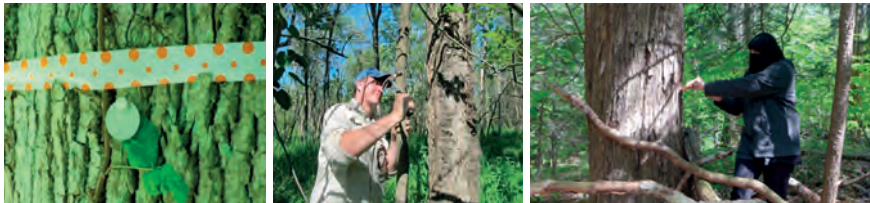
DBH (>10 cm) Condition – esp. tree diseases

Vines Snags & dwd – tree death and dead wood dynamics

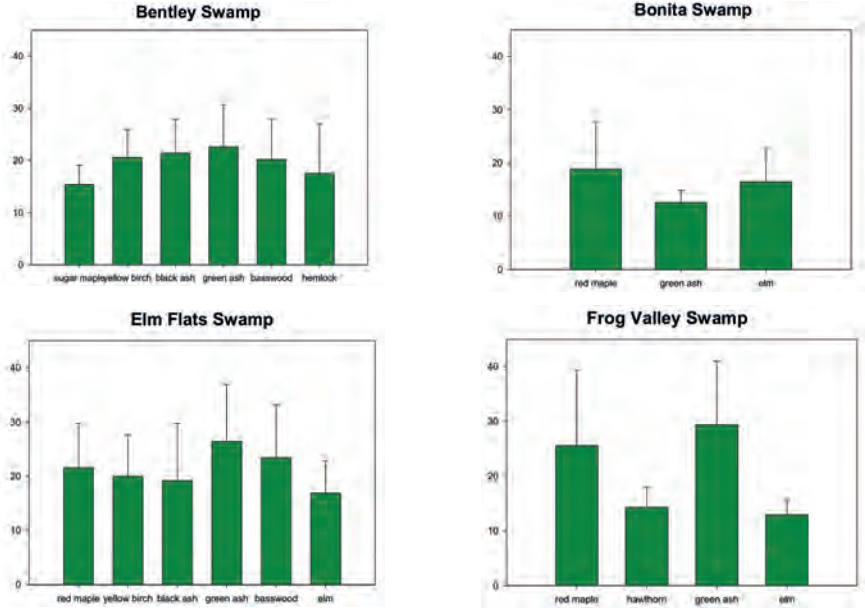
Understory – 4m x 4m quadrats (3 per plot)

Measure understory trees, shrubs, herbs by species, density, %cover, height

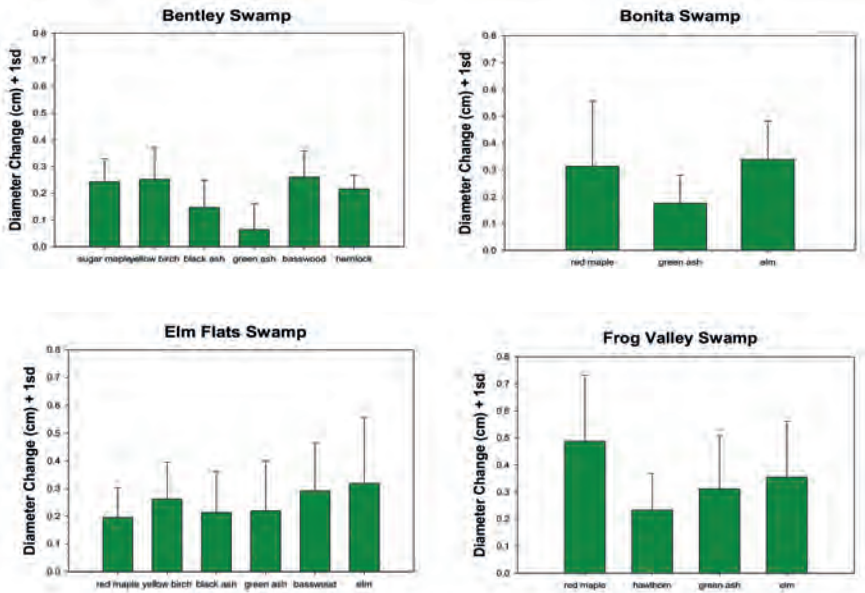
PERMANENT



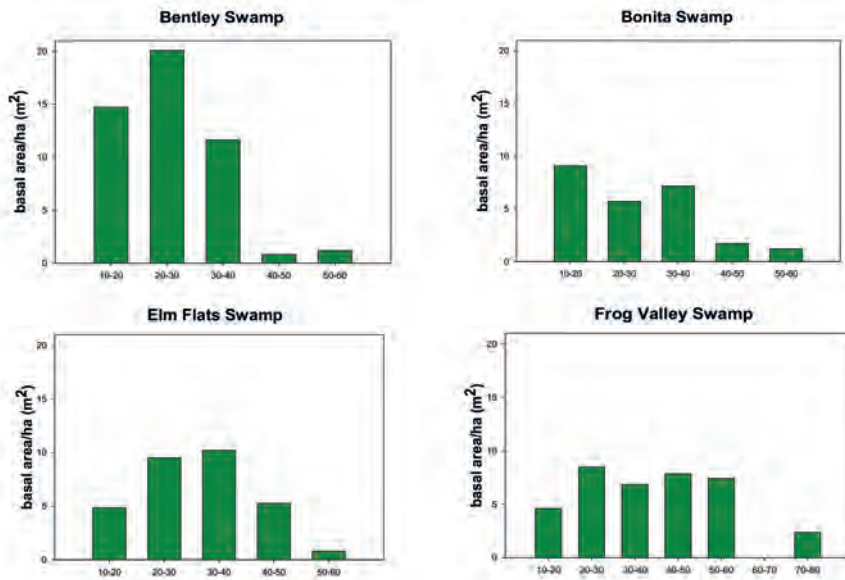
Mean diameter of major tree species in 4 swamps



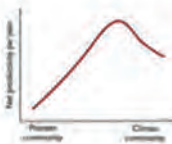
Mean annual diameter change in major tree species in four swamps 2009-2016



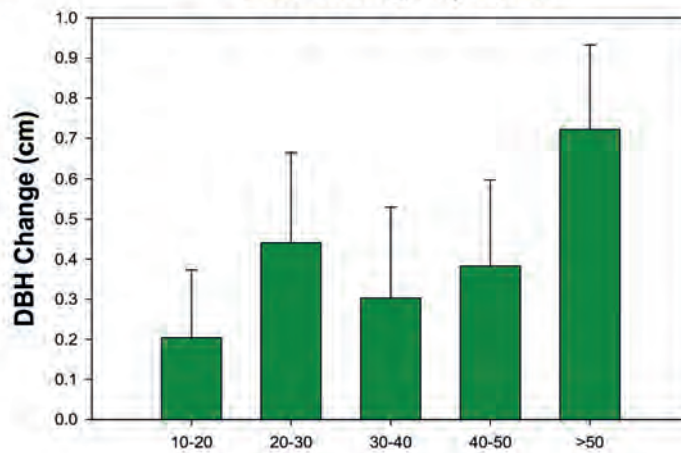
Total basal area by diameter in four swamps



Mean annual diameter change in 10 cm diameter classes

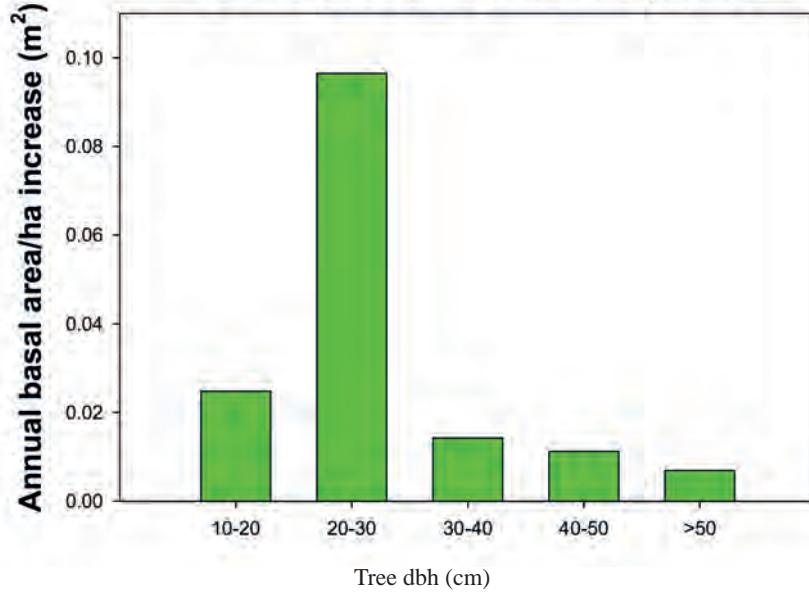


DBH Change by DBH

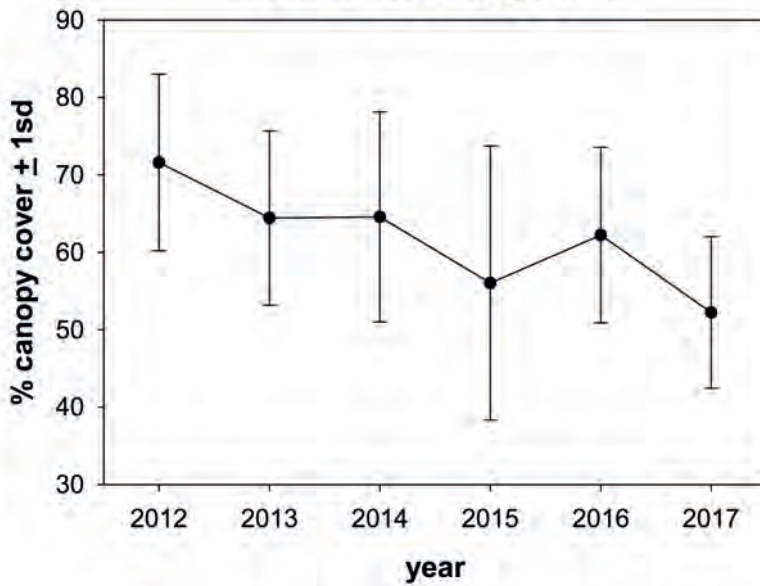


Total annual basal area increase in 10 cm diameter classes

Total basal area increase by DBH

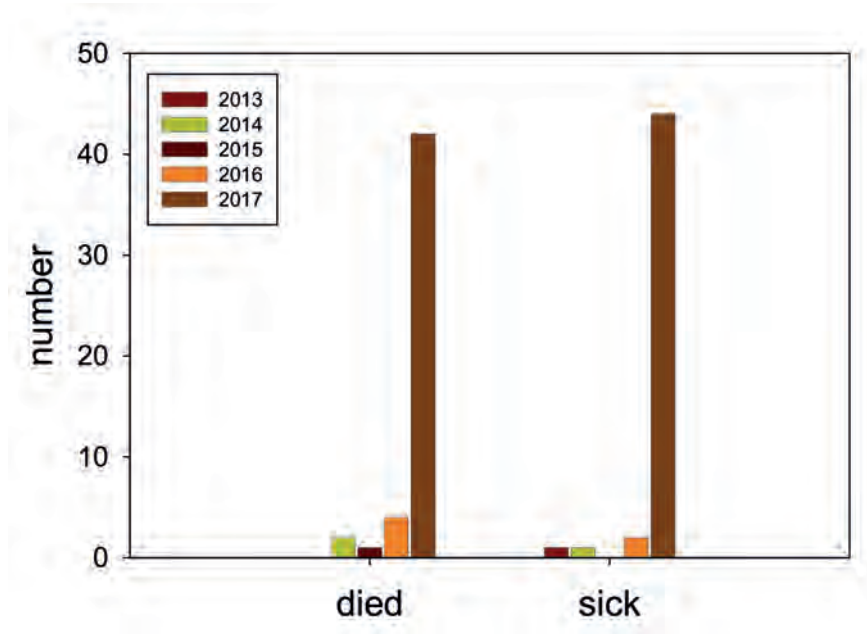


Wetland % Canopy Cover

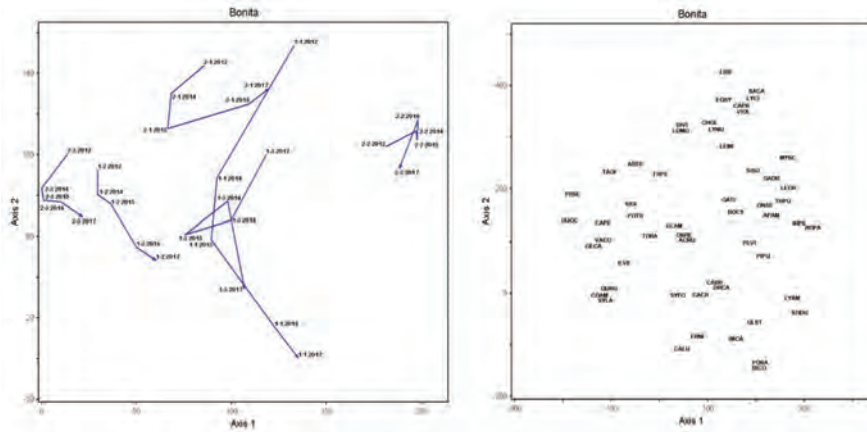


repeated measures ANOVA $p < 0.01$

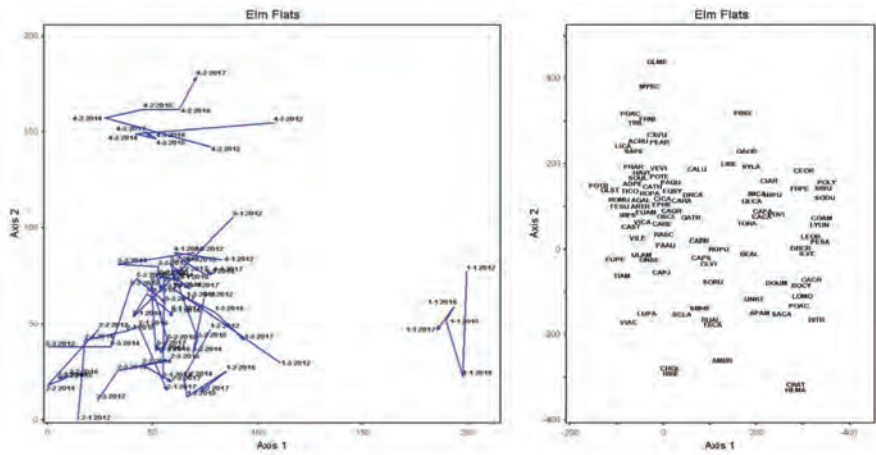
Number trees dying or becoming sick each year



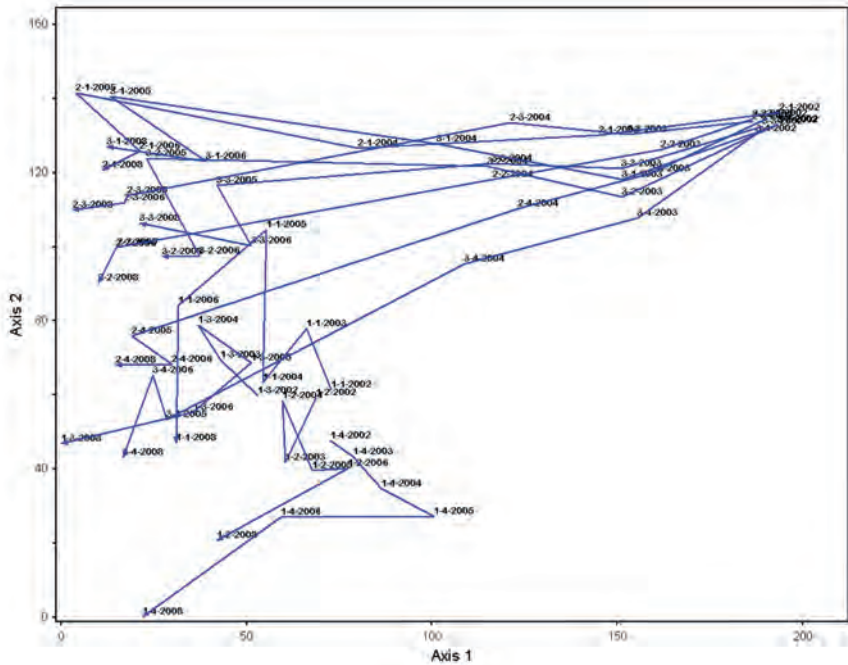
The understory:
Bonita 2012-2017



Elm Flats 2012-2017



Succession on Mount St Helens



A pattern is evident here unlike in the swamp understories.

Swamps

Swamp forest structure

Forests are maturing into old growth – let them

EAB will change these forested wetland communities...

No clear patterns yet in understory

The future... continue to monitor



ACKNOWLEDGEMENTS

Thanks to the Falcone Biology Endowment, Holmberg Foundation and Yunghans-Dietter Research Award for funding participating students and research. Thanks to Joe Pusch and Darin Schulz for permission to work at the College Lodge and NSSWNY, CWC and Jamestown Audubon for permission to work in the wetland preserves. Thanks to Priscilla Titus, Dawn Hunt, Ed McCarrick, Tracy Marafiotte, Jamie Hoggard, Elias Hoggard, Ted Lee, Mike Jabot, Dennis Wilson, Christina Jarvis, Tom Annear, Shane Murphy, Tiffany Wong, Chris Wemmer, Muna Alabba-di, Kim Pasnik, Tera Douglas, Samantha Fleming, Chris Wemmer, Erik Danielsen, Melanie Smith, Kelsey Ruffino, Kaleh Mendez-de Mello, Jonathan Townsend, Alex, Jessica Wooten, Tom Cagginelli, Tyler Christensen, Munayfah Aluwari, Musaad Aluwari, Julia Torres, Allison Martin, Hans Toews, Michael Cross, Dennis Wilson, BIOL115, BIOL133 and BIOL450 students, and many more!

