

Tables and figures

Table 1 Simulated transfers among OSR according to the equalisation formula - year 2001

	<i>Per-capita (Euro)</i>					<i>Absolute values (millions of Euro)</i>			
	Fiscal capacity		Health need	Economies of scale	Total transfer	Fiscal capacity		Health need	Economi of sc:
	VAT	Other taxes				VAT	Other taxes		
	<i>1</i>	<i>2</i>	<i>3</i>	<i>4</i>	<i>5=1+2+3 +4</i>	<i>6</i>	<i>7</i>	<i>8</i>	<i>9</i>
Piemonte	-39	-91	43	-5	-92	-166	-391	185	
Lombardia	-86	-260	-9	-34	-389	-778	-2337	-83	
Veneto	-53	-96	-9	-8	-166	-236	-428	-40	
Liguria	-87	65	128	59	165	-143	106	211	
Emilia R.	-101	-165	69	0	-197	-400	-650	271	
Toscana	-46	-21	60	8	1	-163	-73	213	
Marche	-7	28	24	67	112	-10	41	35	
Umbria	19	66	57	104	247	16	55	48	
Lazio	-29	-104	-23	-19	-175	-150	-546	-120	
Abruzzo	70	152	11	75	309	90	194	14	
Molise	122	243	27	166	558	40	80	9	
Campania	164	312	-62	-26	388	950	1810	-361	
Basilicata	176	294	-32	125	563	107	180	-19	
Puglia	133	320	-63	-3	388	544	1312	-258	
Calabria	143	311	-51	43	446	297	644	-107	
Sum of positive values						2045	4421	987	

Table 2: Distribution of total revenue - year 2001						
	<i>Actual revenue</i>			<i>Simulated revenue using equalisation formula</i>		
	Total revenue (millions of Euro)	Total revenue per-capita (Euro)	Total revenue (deviation from mean)	Total revenue (millions of Euro)	Total revenue per-capita (Euro)	Total revenue (deviation from mean)
	1	2	3	4	5	6
Piemonte	5709	1331	2.0	5804	1353	3.7
Lombardia	11688	1299	-0.5	11621	1292	-1.1
Veneto	5792	1296	-0.7	5805	1299	-0.5
Liguria	2386	1453	11.3	2439	1485	13.8
Emilia R.	5564	1409	7.9	5499	1393	6.7
Toscana	4844	1374	5.2	4851	1376	5.4
Marche	1896	1306	0.0	2024	1394	6.7
Umbria	1193	1433	9.7	1215	1460	11.8
Lazio	6752	1289	-1.2	6679	1275	-2.3
Abruzzo	1725	1352	3.5	1756	1376	5.4
Molise	471	1427	9.3	486	1471	12.7
Campania	6927	1195	-8.5	6856	1183	-9.4
Basilicata	813	1332	2.0	834	1366	4.6
Puglia	4947	1208	-7.5	4932	1204	-7.8
Calabria	2715	1310	0.3	2618	1263	-3.3
Total	63418			63418		

Table 3: Additional revenue from tax effort

	Percentage of total revenues	Euro per- capita
Piemonte	11.0	146
Lombardia	14.4	187
Veneto	11.2	145
Liguria	7.6	111
Emilia Romagna	11.3	160
Toscana	9.2	127
Marche	9.0	118
Umbria	7.3	105
Lazio	11.9	153
Abruzzo	6.8	92
Molise	5.1	73
Campania	5.5	65
Basilicata	5.0	66
Puglia	5.3	63
Calabria	4.8	63
Total	9.8	128

Table 4 Financial needs generated by devolution - year 2001

	<i>Absolute values (millions of Euro)</i>					<i>Per-capita values (Euro)</i>				
	Public order and safety	Education	University	Health	Total	Public order and safety	Education	University	Health	Total
Piemonte	490	2090	416	24	3020	114	487	97	6	704
Lombardia	758	4228	874	82	5942	84	470	97	9	660
Veneto	353	2278	445	46	3122	79	510	100	10	699
Liguria	241	749	322	51	1362	147	456	196	31	830
Emilia Rom.	401	1818	658	104	2980	102	460	167	26	755
Toscana	478	1911	717	63	3170	136	542	203	18	899
Marche	160	865	168	29	1222	110	596	116	20	842
Umbria	107	526	183	11	827	129	631	220	13	993
Lazio	1405	3613	1003	250	6271	268	690	192	48	1198
Abruzzo	164	838	121	19	1143	129	656	95	15	895
Molise	63	234	19	4	320	192	709	57	12	970
Campania	774	4164	705	150	5793	134	719	122	26	1000
Basilicata	77	520	18	6	620	126	851	29	10	1016
Puglia	450	2577	289	52	3368	110	629	71	13	822
Calabria	343	1643	77	39	2101	165	792	37	19	1014
Total	6265	28053	6016	929	41263	129	578	124	19	850

Source: Arachi and Zanardi (2001)

Table 5 Alternative financing in case of fundamental devolution - year 2001

	Absolute values (millions of Euro)					Per-capita values (Euro)				
	Total needs	<i>Personal income tax surcharge: rate 10,37%</i>		<i>VAT sharing: rate 96,5%</i>		Total needs	<i>Personal income tax surcharge: rate 10,37%</i>		<i>VAT sharing: rate 96,5%</i>	
Revenue		Fiscal imbalances	Revenue	Fiscal imbalances	Revenue		Fiscal imbalances	Revenue	Fiscal imbalances	
Piemonte	3020	4304	-1284	3892	-871	704	1004	-299	908	-203
Lombardia	5942	9867	-3925	8812	-2870	660	1097	-436	979	-319
Veneto	3122	4255	-1133	4151	-1029	699	952	-254	929	-230
Liguria	1362	1553	-190	1610	-248	830	945	-116	980	-151
Emilia Romagna	2980	4292	-1311	3955	-975	755	1087	-332	1002	-247
Toscana	3170	3277	-107	3240	-71	899	929	-30	919	-20
Marche	1222	1210	12	1249	-27	842	834	8	860	-18
Umbria	827	665	162	683	144	993	799	195	821	172
Lazio	6271	4659	1613	4675	1597	1198	890	308	893	305
Abruzzo	1143	831	311	949	194	895	651	244	744	152
Molise	320	183	137	220	101	970	555	415	665	305
Campania	5793	2837	2957	3494	2299	1000	489	510	603	397
Basilicata	620	306	315	357	263	1016	501	515	585	431
Puglia	3368	2091	1277	2660	708	822	511	312	650	173
Calabria	2101	917	1184	1314	787	1014	442	571	634	380
Total	41263	41247	0	41261	0	850	849	0	849	0
Sum of positive values	0	0	7967	0	6092	0	0	0	0	0

Table 6 Projected transfers in 2013 according to equalisation formula

	<i>Baseline scenario for regional GDP growth rates</i>				<i>Higher growth in Southern regions</i>			
	<i>Needs grow as GDP</i>		<i>Needs grow faster than GDP due to population ageing</i>		<i>Needs grow as GDP</i>		<i>Needs grow faster than GDP due to population ageing</i>	
	<i>Absolute values</i>	<i>Per-capita</i>	<i>Absolute values</i>	<i>Per-capita</i>	<i>Absolute values</i>	<i>Per-capita</i>	<i>Absolute values</i>	<i>Per-capita</i>
Piemonte	-408	-96	-270	-63	-210	-49	-72	-17
Lombardia	-4568	-487	-4446	-474	-3972	-424	-3851	-411
Veneto	-1055	-225	-1024	-218	-828	-176	-798	-170
Liguria	243	160	348	228	305	200	409	269
Emilia Romagna	-1437	-350	-1332	-325	-1179	-287	-1075	-262
Toscana	-314	-88	-182	-51	-147	-41	-15	-4
Marche	344	227	461	304	383	253	501	330
Umbria	348	407	385	449	365	425	401	468
Lazio	-1911	-352	-1997	-368	-1617	-298	-1703	-314
Abruzzo	696	533	731	559	511	391	545	417
Molise	291	906	300	933	252	784	261	812
Campania	3384	577	2722	464	2612	446	1951	333
Basilicata	540	910	557	939	472	795	489	824
Puglia	2449	597	2383	581	1913	466	1848	450
Calabria	1375	682	1364	677	1120	556	1109	550
Sum of positive values	9671		9252		7933		7514	

Table 7 Projected transfers in 2013 according to equalisation formula in case of fundamental devolution

	<i>Baseline scenario for regional GDP growth rates</i>				<i>Higher growth in Southern regions</i>			
	<i>Needs grow as GDP</i>		<i>Needs grow faster than GDP due to population ageing</i>		<i>Needs grow as GDP</i>		<i>Needs grow faster than GDP due to population ageing</i>	
	Absolute values	Per-capita	Absolute values	Per-capita	Absolute values	Per-capita	Absolute values	Per-capita
Piemonte	-1057	-248	-872	-205	-689	-162	-511	-120
Lombardia	-6067	-647	-5809	-620	-5067	-541	-4830	-515
Veneto	-1600	-341	-1538	-328	-1176	-250	-1123	-239
Liguria	-519	-341	-392	-257	-372	-244	-248	-163
Emilia Romagna	-2940	-716	-2750	-670	-2469	-601	-2290	-558
Toscana	-1363	-384	-1191	-336	-1028	-290	-863	-243
Marche	335	221	449	296	429	283	541	357
Umbria	341	398	375	438	387	452	420	490
Lazio	-2286	-421	-2346	-432	-1756	-323	-1826	-336
Abruzzo	994	760	1006	770	655	501	675	517
Molise	383	1192	385	1197	308	958	312	969
Campania	6611	1128	5783	986	5210	889	4411	752
Basilicata	850	1432	851	1434	720	1213	724	1219
Puglia	4082	995	3908	952	3090	753	2937	716
Calabria	2215	1100	2141	1063	1737	862	1672	830
Sum of positive values	15811		14898		12537		11691	

Table 8 Projected transfers among OSR according to the equalisation formula - year 2013, millions of euro

	Without devolution					With devolution					
	Fiscal capacity		Health need	Economies of scale	Total transfer	Fiscal capacity		Health need	Education need	Economies of scale	Total transfer
	VAT	Other taxes				VAT	Other taxes				
	1	2	3	4	5=1+2+3+4	6	7	8	9	10	11=6+7+8+9+10
Piemonte	-145	-501	313	-74	-408	-364	-501	313	-431	-74	-1057
Lombardia	-656	-3102	-146	-663	-4568	-1641	-3102	-146	-514	-663	-6067
Veneto	-280	-603	-71	-101	-1055	-702	-603	-71	-123	-101	-1600
Liguria	-331	57	334	184	243	-829	57	334	-264	184	-519
Emilia R.	-733	-1191	481	6	-1437	-1834	-1191	481	-402	6	-2940
Toscana	-442	-324	366	87	-314	-1107	-324	366	-384	87	-1363
Marche	20	108	63	153	344	49	108	63	-38	153	335
Umbria	26	90	84	149	348	64	90	84	-46	149	341
Lazio	-406	-1152	-212	-142	-1911	-1016	-1152	-212	235	-142	-2286
Abruzzo	171	345	25	155	696	429	345	25	39	155	994
Molise	60	124	15	93	291	150	124	15	2	93	383
Campania	1364	2821	-622	-179	3384	3415	2821	-622	1176	-179	6611
Basilicata	163	278	-32	131	540	408	278	-32	65	131	850
Puglia	788	2080	-441	22	2449	1973	2080	-441	448	22	4082
Calabria	402	969	-177	180	1375	1006	969	-177	236	180	2215
Sum of positive values	2993	6873	1680	1159	9670	7494	6873	1680	2201	1159	15811

Figure 1 Per capita revenue in 2001 and in 2013 under alternative scenarios
(percentage deviations from mean)

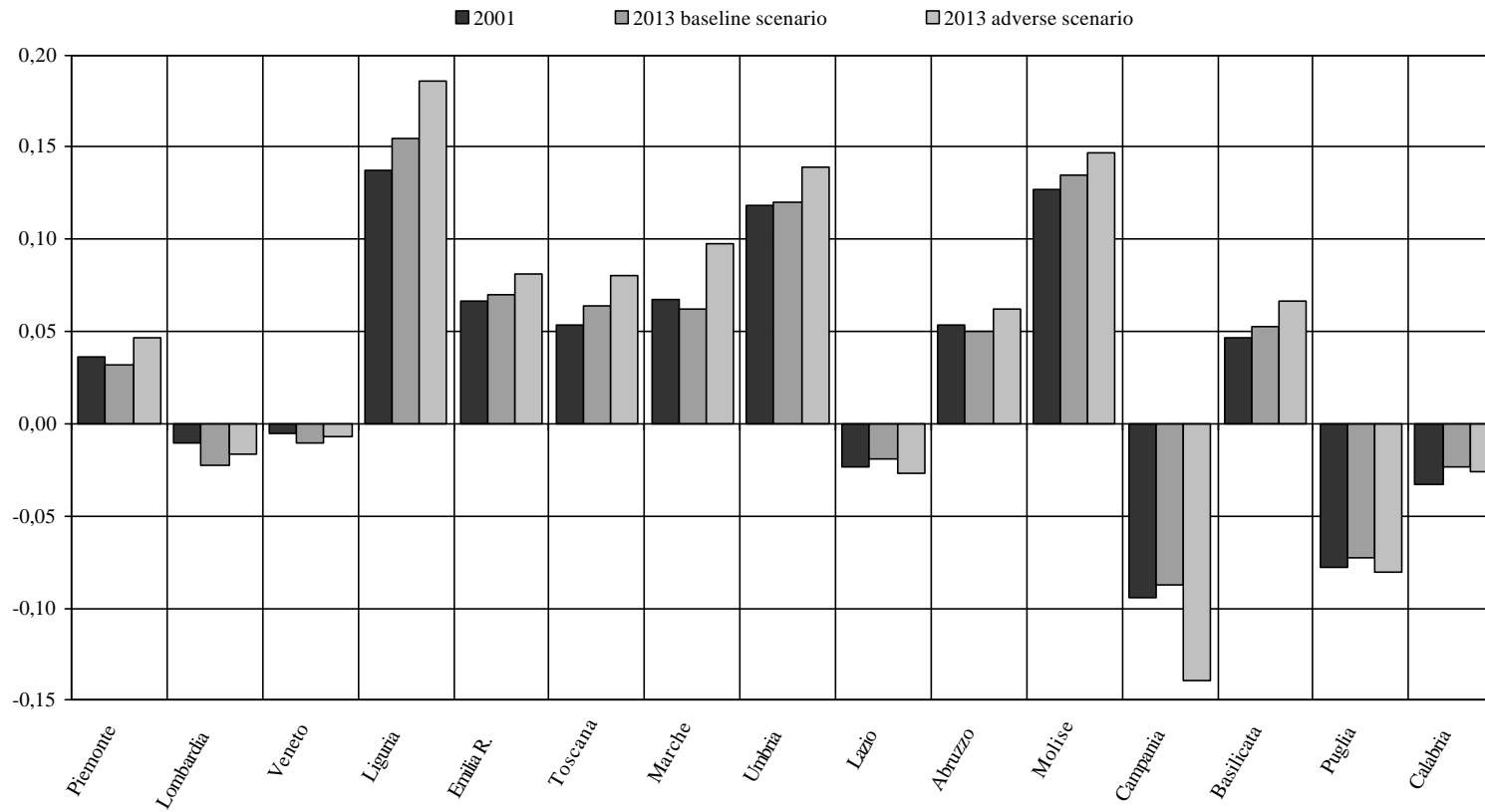


Figure 2 Total revenue/ health need - year 2013

